



The Dial Range Reserves Infrastructure Projects

Overview

The Dial Range Reserve allows for a number of recreational activities including bush walking, mountain bike riding, horse riding and kayaking. The Dial Range Reserves Recreation Management Plan was released in 2023 to guide the future management of the reserves, including developing several loop walks offering a variety of features, difficulties and distances.

In 2024, the Tasmanian Government committed \$1.6 million over four years to developing unique experiences in the Dial Range Reserves, near Penguin. Creating loop walks that provide a range of experiences for visitors from key trailheads is a priority.

PROJECTS

This document describes the projects being delivered by the Tasmania Parks and Wildlife Service (PWS):

- Mt Montgomery loop walking track
- All access boardwalk at Ferndene State Reserve
- Mt Dial to Mt Gnomon circuit walking track
- Resealing Mt Gnomon carpark

Projects

MT MONTGOMERY LOOP WALKING TRACK

Planning work has started on constructing five new sections of walking track to join existing trails creating a circuit that will allow visitors to walk from Mt Montgomery to Mt Dial.

Existing sections of track will be brought up to PWS standard thereby providing visitors a safer walking experience – away from vehicle and mountain bike tracks. The proposed tracks will be constructed to a T2 standard and promote the scenic values of the Dial Range.

Next Level Mountain Bike Pty Ltd have been awarded the contract and will commence works in the coming months.

ALL ACCESS BOARDWALK AT FERDENE STATE RESERVE

Improving access to our parks and reserves is a priority identified by the Tasmanian Government. A new boardwalk in Ferndene State Reserve will traverse McBrides Creek, allowing visitors of all abilities to immerse themselves in the wet eucalypt forest on the western slope of the Dial Range.

Additional planning is proposed to update the amenities and picnic site to be all access.

MT DIAL TO MT GNOMON CIRCUIT WALKING TRACK

A loop walking track linking Mt Dial and Mt Gnomon will be formed using existing tracks and a new section constructed to create the loop.

The new loop will be accessible from multiple points, giving visitors the opportunity to experience the variety of vegetation communities that the Dial Range has to offer.

MT GNOMON CARPARK

The PWS has been working with the Central Coast Council on sealing and delineation work in the Mt Gnomon carpark. Council completed this work, with funding contributed by the PWS, as part of its upgrade of Ironcliff Road in November 2024.

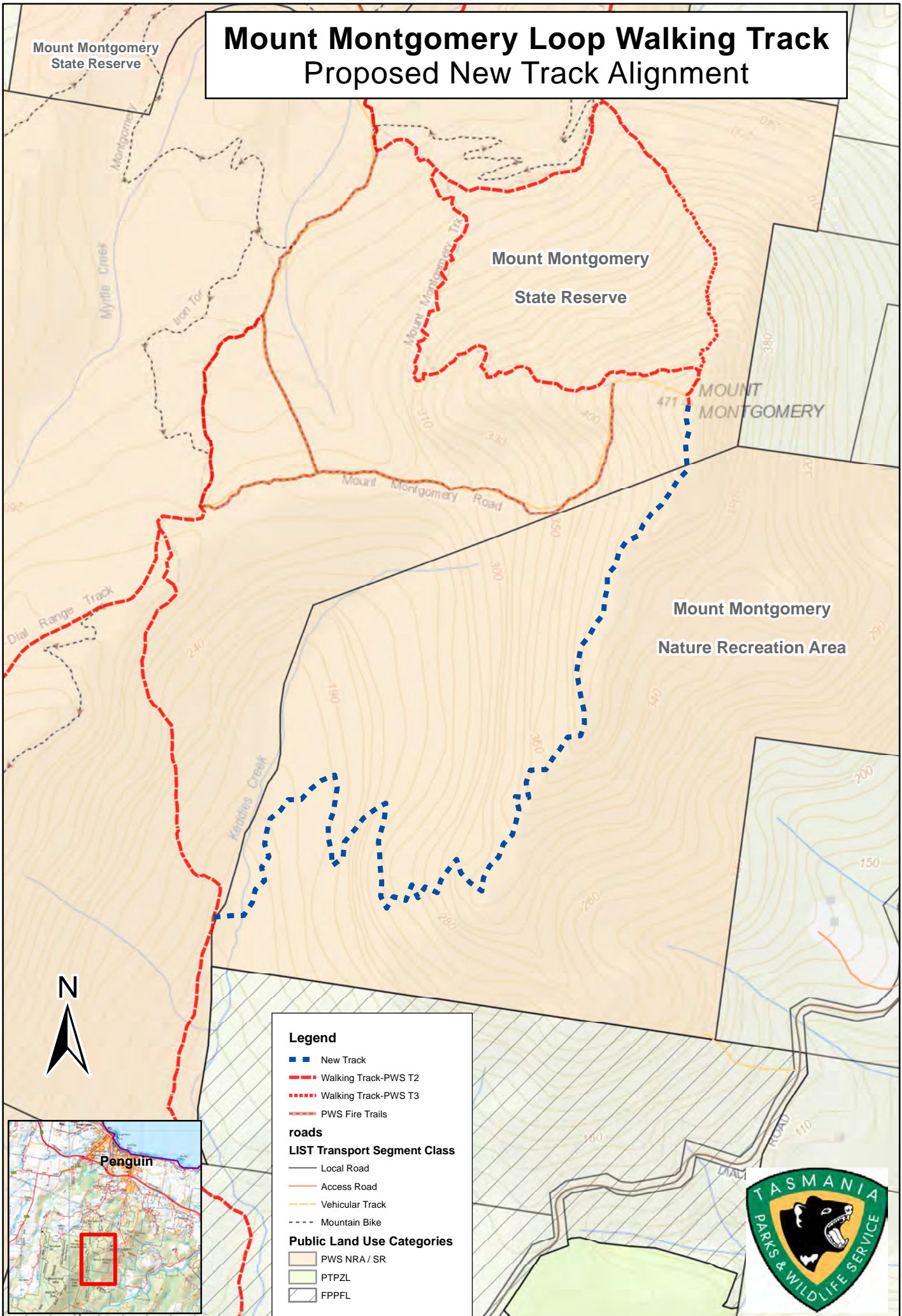
Contact

Updates will be provided as the projects progress.

For enquiries relating to PWS visitor infrastructure projects at the Dial Range Reserves contact DialRange.Projects@parks.tas.gov.au



Mount Montgomery Loop Walking Track Proposed New Track Alignment



Legend

- New Track
- - - Walking Track-PWS T2
- · - · - Walking Track-PWS T3
- - - PWS Fire Trails

roads

LIST Transport Segment Class

- Local Road
- Access Road
- Vehicular Track
- - - Mountain Bike

Public Land Use Categories

- PWS NRA / SR
- PTPZL
- FPPFL

